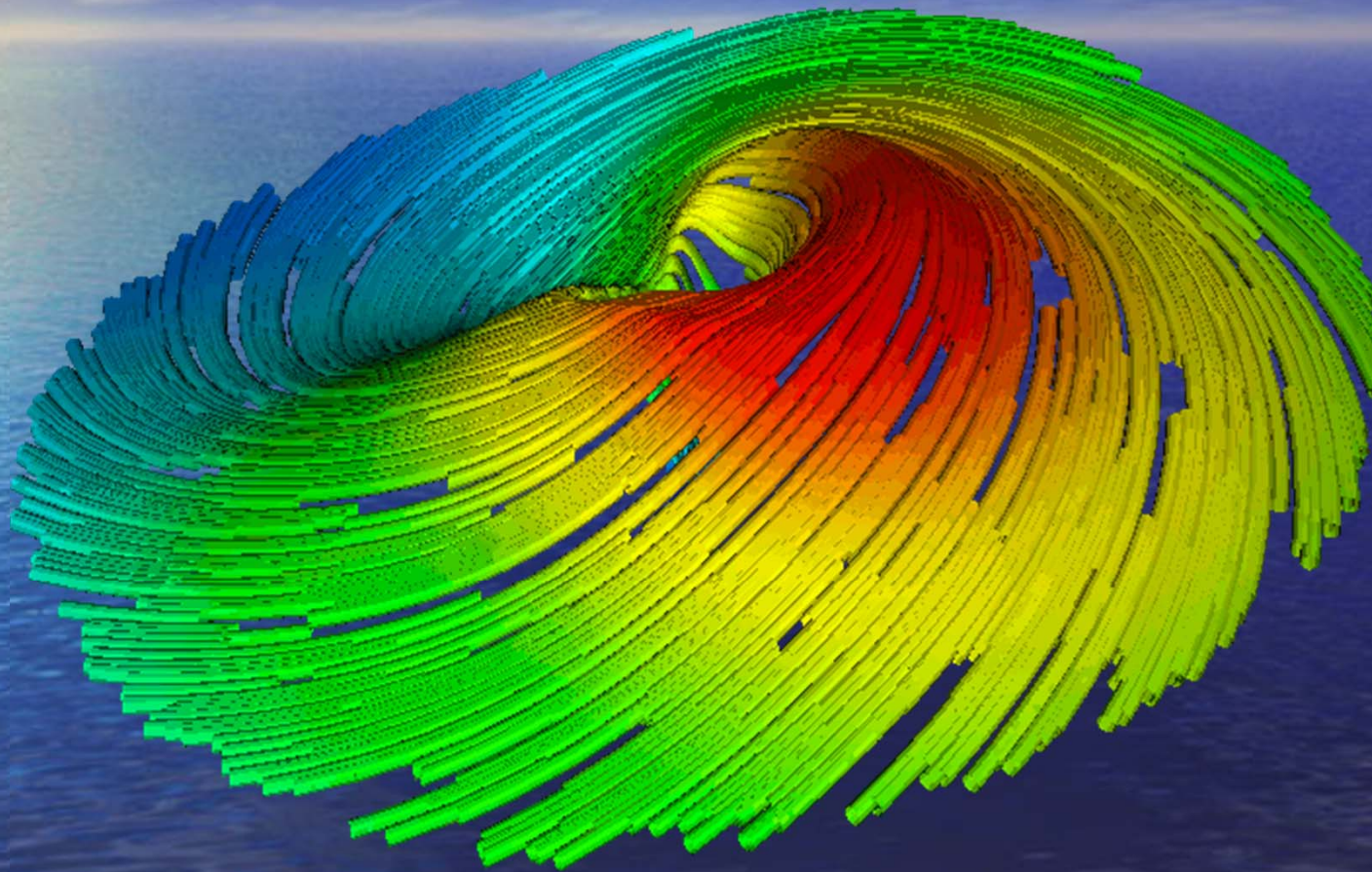


The background of the slide is a photograph of a sunset or sunrise over a vast body of water. The sky is a deep blue with wispy white clouds. A bright, colorful rainbow is visible on the left side of the image, arching over the horizon. The water in the foreground is dark blue with gentle ripples.

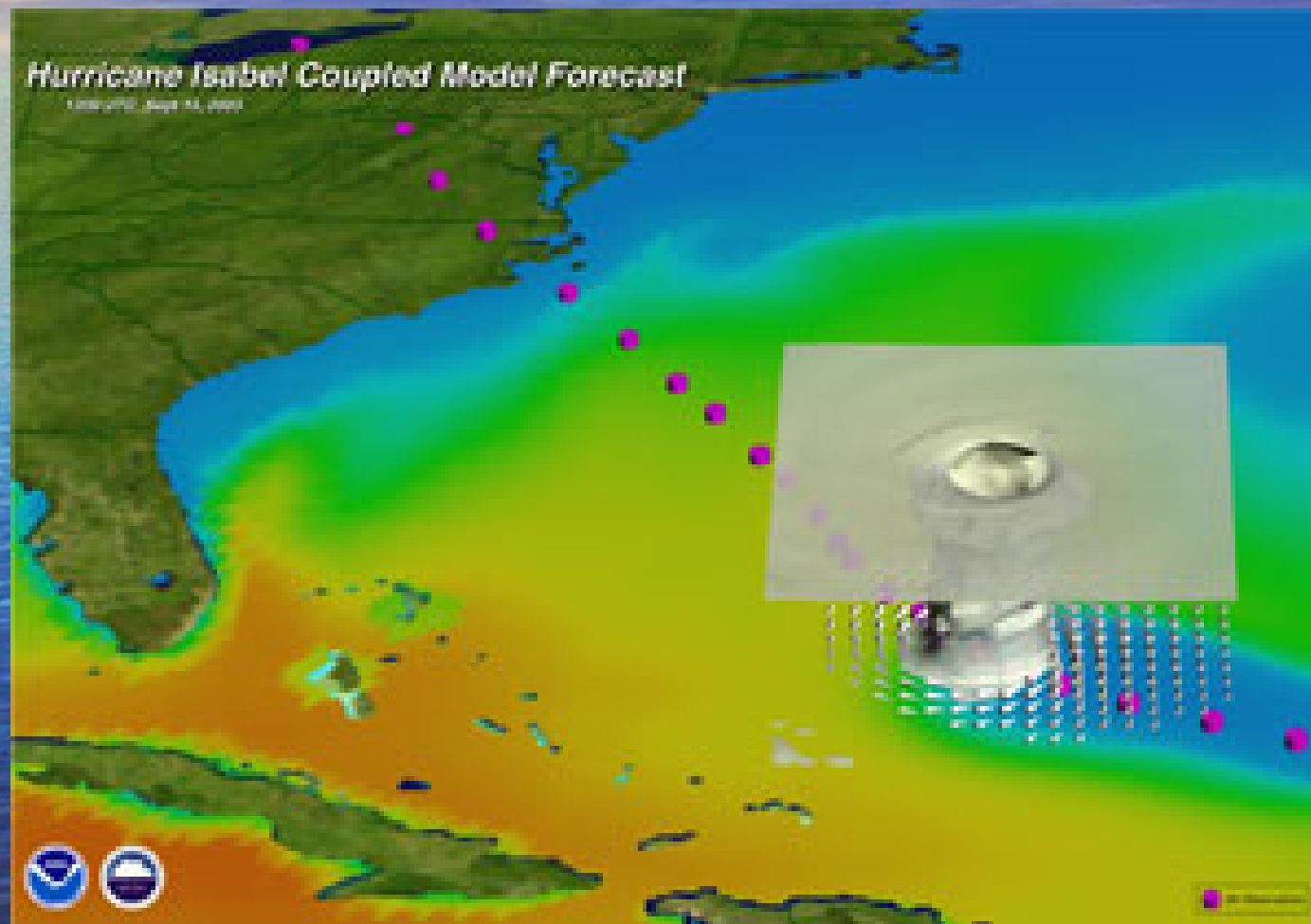
What's New ADCIRC v51

ADCIRC Developers

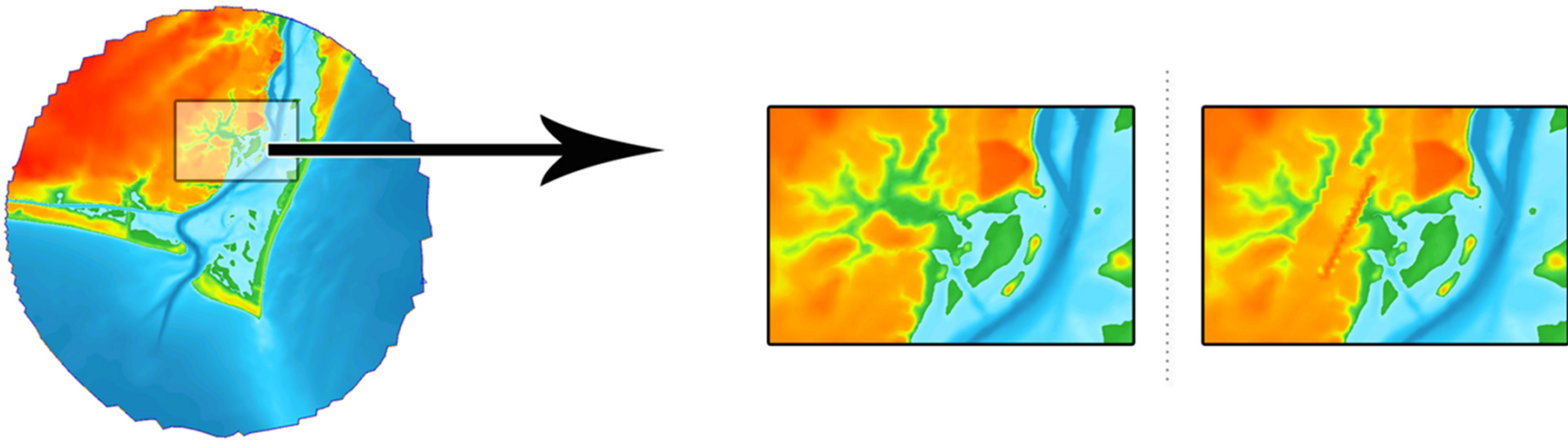
Generalized Asymmetric Model (GAHM)



GFDL Input

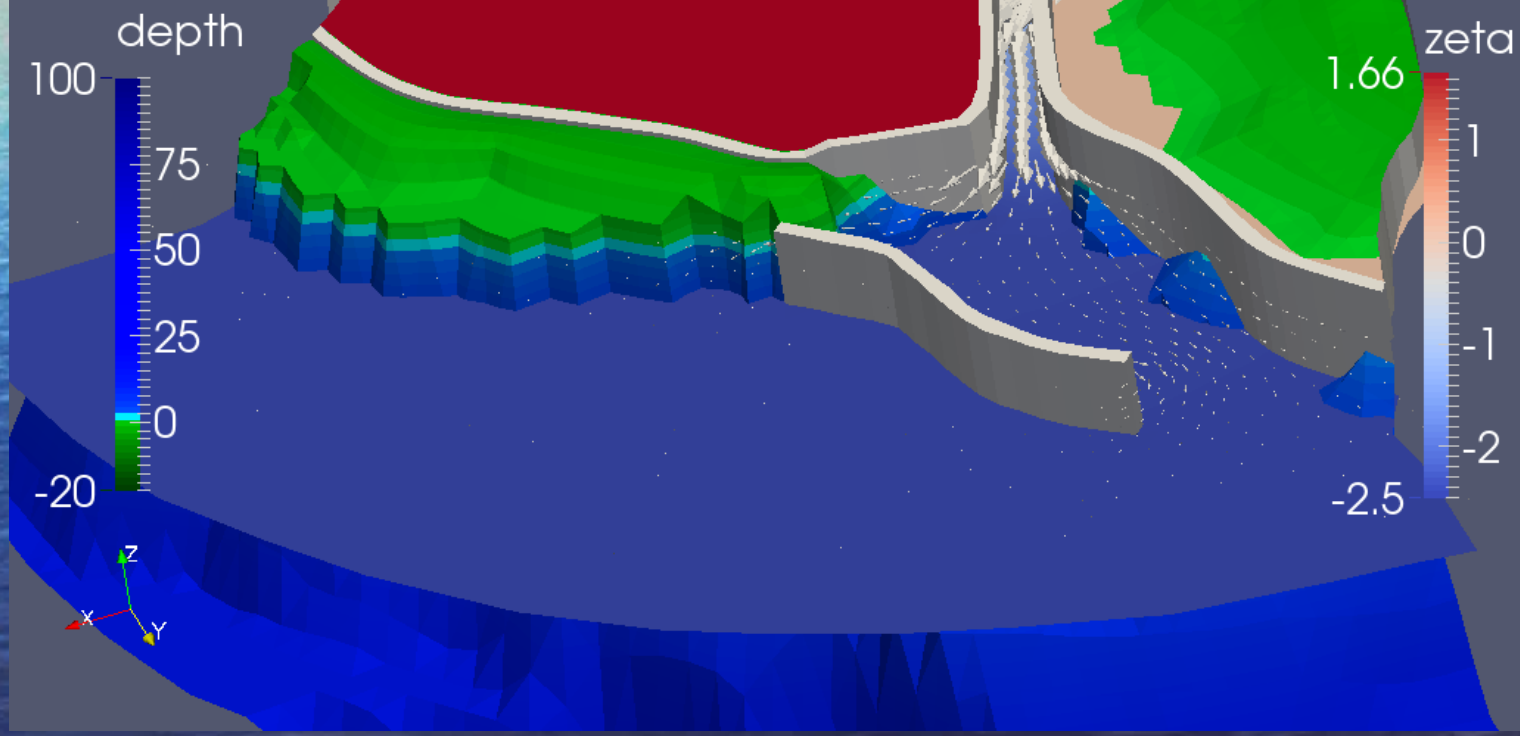


Subdomain Modeling

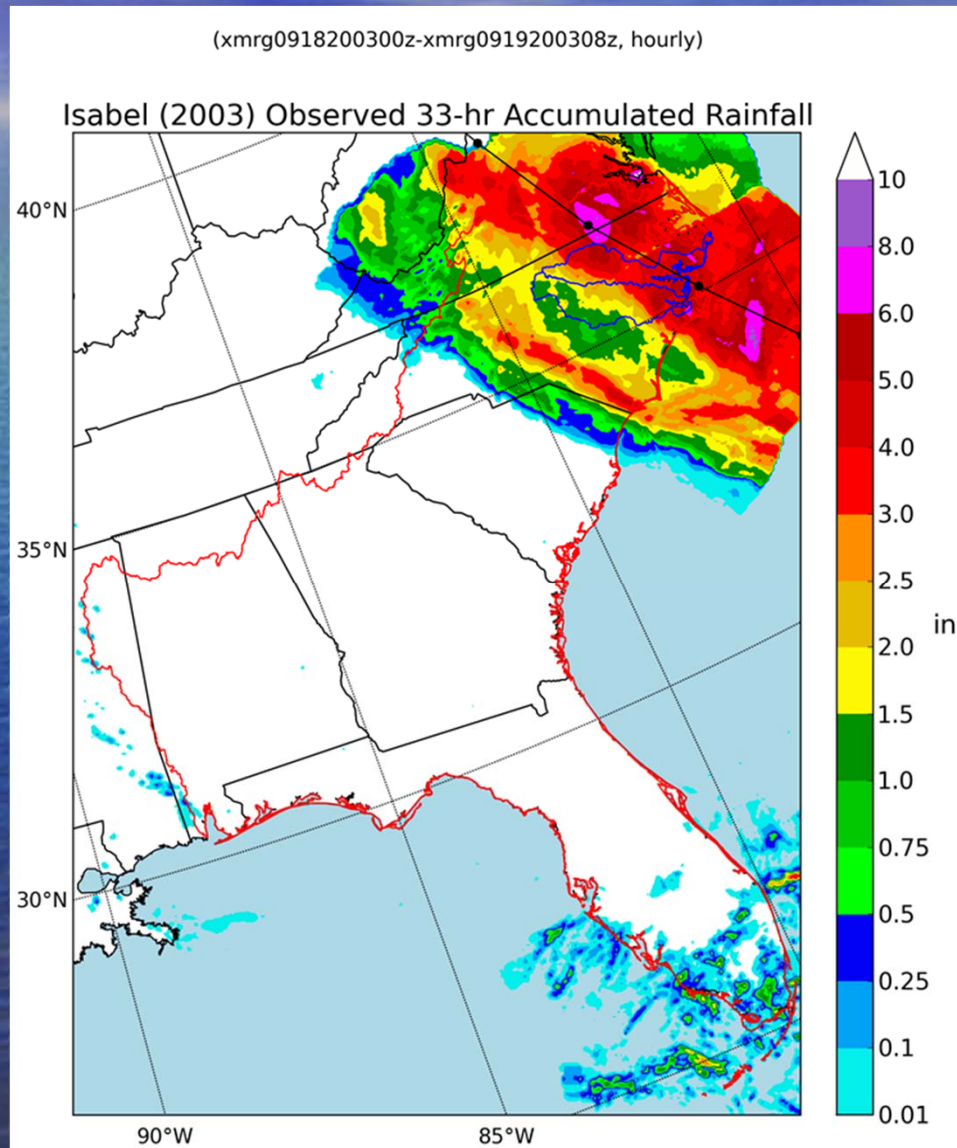


XDMF Input/Output Support

ADCIRC Internal Overflow Test Case
ParaView Visualization
XDMF Data



Rain Source Term



Improvements

- Min/max files to contain time of occurrence
- Time stamped hotstart file names
- Station locations in external files
- Modularization/generalization of input and output
- Levees with cross barrier pipes

Release Candidate

- Merge/test/fix/commit
- Remaining outstanding issues
- Release Candidate
- Crowd sourced testing (veto)
- Final release prior to June 1 2014
- **THANK YOU ADCIRC DEVELOPERS**